

NIHR Coordinated System for gaining NHS Permission (NIHR CSP)

**Information for researchers within
Norfolk & Suffolk CLRN applying for
NHS permission for research**

Applying for NHS Permission for research

Information for researchers in Norfolk & Suffolk CLRN

The new National Institute for Health Research (NIHR) Coordinated System for gaining NHS Permissions (NIHR CSP) is being introduced in the NHS in England from **18 November 2008** for NIHR Clinical Research Network Portfolio studies.

NIHR CSP will streamline the processes by which NHS Trusts provide permission (sometimes known as R&D approval) for new research and reduce duplication in NHS review processes. NIHR CSP will have a single entry point, via the Integrated Research Application System (IRAS), so that researchers will be able to apply for permission from all NHS sites in England through a single gateway.

Researchers wishing to gain NHS permissions from **18 November 2008** should note the following important changes:

1. From 18 November, researchers submitting a new application for NHS permission for a study that is automatically eligible for the NIHR Clinical Research Network Portfolio, or that requires formal consideration prior to acceptance on the Portfolio, should apply for NHS permissions via NIHR CSP.
2. Initially, NIHR CSP will not be available for studies not included in the NIHR Clinical Research Network Portfolio. Researchers whose study is not eligible for the Portfolio should continue to seek permission directly from the NHS Trusts involved in the study.
3. The eligibility criteria for inclusion of studies on the NIHR Clinical Research Network Portfolio have been set out by the Department of Health and this guidance can be accessed at: http://www.crnc.nihr.ac.uk/index/clinical/portfolio_new.html
4. Applications for NHS Permission through NIHR CSP must be made via the Integrated Research Application System (IRAS) at the following link: www.myresearchproject.org.uk
5. Further information on NIHR CSP is available at: <http://www.crnc.nihr.ac.uk/index/clinical/csp.html> . Please email queries to ccrn.csp@nihr.ac.uk

Researchers who have submitted an application for NHS Ethical Review via the NRES on-line application form (i.e. not via IRAS) should continue to seek permission directly from the NHS Trusts involved in the study.

Further details

NIHR Clinical Research Network Portfolio

The NIHR Clinical Research Network Portfolio comprises a set of research projects which meet a set of eligibility criteria. For a study to be adopted onto the NIHR Clinical Research Network Portfolio it must be funded by either a research grant obtained through a national peer reviewed process or be commercially sponsored. Student projects are generally not eligible unless undertaken within a project which meets the eligibility criteria. The full eligibility criteria are available at <http://www.crncc.nihr.ac.uk>

The advantages to a study being adopted onto the NIHR Clinical Research Network Portfolio are

- The study is eligible for NHS Service Support funding ie the costs associated with the NHS hosting a study (blood test, MRI scans, clinician time taken to consent patients, etc). Further details on what constitutes NHS Service Support costs are available at http://www.dh.gov.uk/en/Publicationsandstatistics/Publications/PublicationsPolicyAndGuidance/DH_4125280 or through your local R&D Office.
- The study is eligible for set up support from an NIHR Clinical Research Network
- NHS permission for research (ie R&D approval) will be facilitated through the NIHR Coordinated System for gaining NHS Permission (NIHR CSP).

If your study is not eligible for the NIHR Clinical Research Network Portfolio then it will not receive the support listed above. When applying for NHS permission to undertake a study not adopted onto the NIHR Clinical Research Network Portfolio please contact your local Trust or University R&D Office for advice. See below for contact details.

NIHR CSP Summary

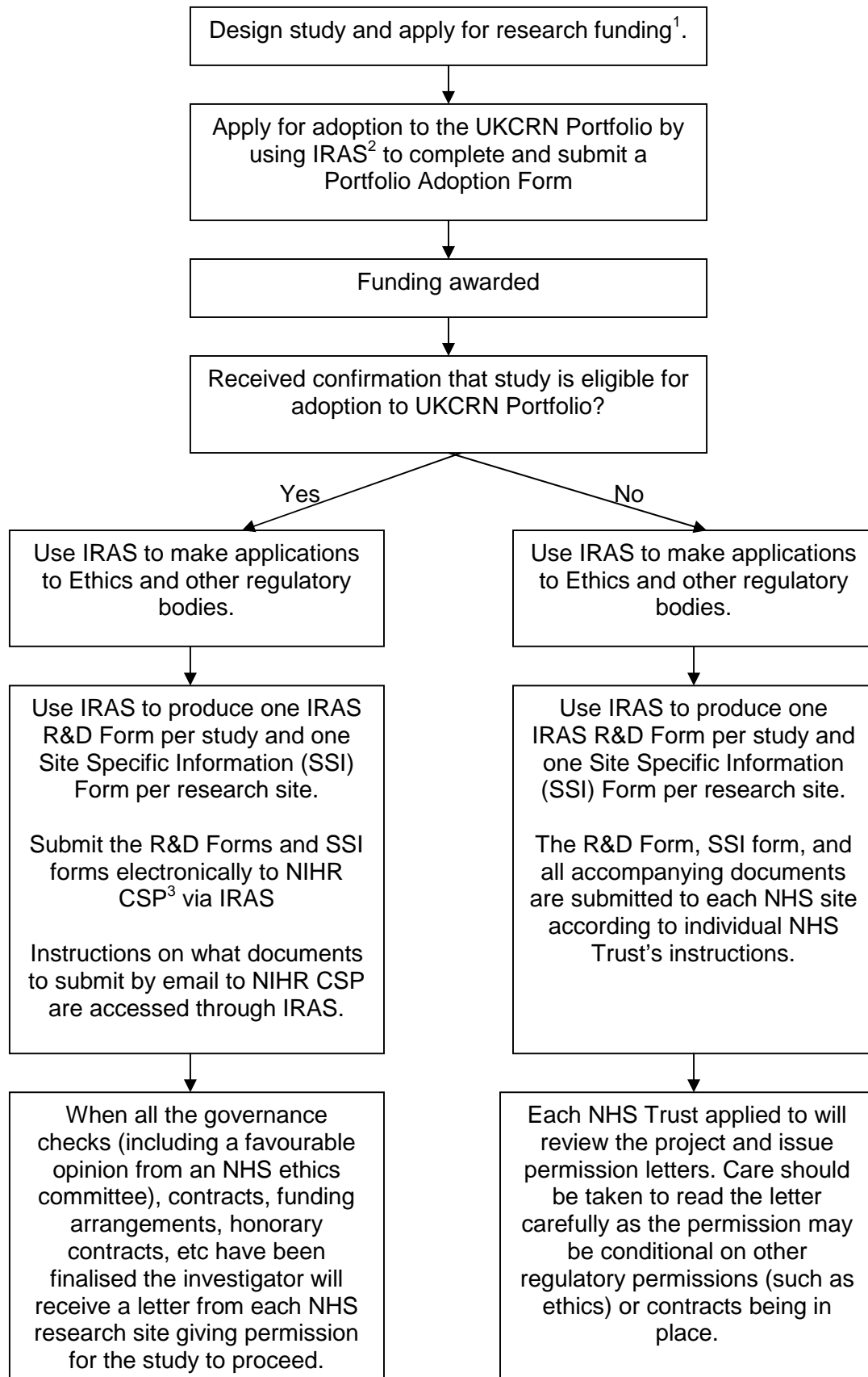
The NIHR Coordinated System for gaining NHS Permission (CSP) is a nationally streamlined and standardised process for NHS permission (sometimes called R&D approval) and has been available from 18th November 2008.

The benefits of NIHR CSP are

- **A single point of entry for all NHS approvals** – electronic via IRAS followed up by emailed study documents
- **A streamlined, standardised system of research governance review** – the same review no matter what Trust is applied to and transparency about what that review consists of.
- **Reduction in duplication in the NHS review process** – the governance checks that are relevant to the study as a whole are done once and only once (global checks); the governance checks that are relevant to the local site are done specifically for that site (local checks).

Within the Norfolk & Suffolk CLRN, all the local Trust R&D offices along with staff from the CLRN core team will be part of the operation of CSP.

How to apply for NHS permission for research (R&D approval) from 18th November 2008



¹ Help with study design is available from the Research Design Service, Lee Berney email: l.berney@uea.ac.uk . Help with making an application for grant funding is available from your employing organisation's R&D Office.

² IRAS – Integrated Research Application System used to make R&D, Ethics and other regulatory applications. Available at www.myresearchproject.org.uk

³ Further details about the CSP process are given at <http://www.crccc.nihr.ac.uk/index/clinical/csp.html>

If you are in any doubt about any aspect of applying for NHS permission for research please seek advice from the R&D Office that manages research for your employing organisation.

Contact details

Norfolk & Suffolk CLRN

Tel: 01603 288317. Email: norfolksuffolk.cln@nnuh.nhs.uk

Website: <http://norfolk-suffolk.crccc.nihr.ac.uk>

Portfolio queries

David Ward, Tel: 01603 289818, email david.ward@nnuh.nhs.uk

General CSP or Research Management and Governance queries

Frances Farnworth, Tel: 01473 704787 email: frances.farnworth@ipswichhospital.nhs.uk

Trust R&D Offices

Norfolk and Norwich University Hospitals Foundation NHS Trust

Tel: 01603 287408, Email: rdoffice@nnuh.nhs.uk

Website: <http://www.nnuh.nhs.uk/Dept.asp?ID=60>

The Ipswich Hospital NHS Trust (also covering Suffolk Mental Health Partnership)

Tel: 01473 704343, Email: research.office@ipswichhospital.nhs.uk

Website: <http://www.ipswichhospital.org.uk/microsites/research/default.asp>

James Paget University Hospitals NHS Foundation Trust

Tel: 01493 453320/452432, Email: Karen.reavell@jpaget.nhs.uk

NHS Norfolk (covering Great Yarmouth & Waveney PCT and NHS Suffolk)

Tel: 01603 257009, Email: Research&DevelopmentOffice@norfolk.nhs.uk

Website: <http://www.norfolkhealthresearch.nhs.uk/nhr/309/7/22.html>

Norfolk & Waveney Mental Health Foundation NHS Trust

Tel: 01603 421340, Email: brenda.jones@nwmhp.nhs.uk

Website: <http://www.norfolkhealthresearch.nhs.uk/nhr/309/7/31.html>

East of England Ambulance Service NHS Trust

Tel: 07971 287986. Email: theresa.foster@eastamb.nhs.uk

Website: <http://www.eastamb.nhs.uk/research>

University of East Anglia R&D Offices

Research, Enterprise and Engagement Office – Sue Steel and Tracy Moulton
Tel: 01603 591479

Faculty of Health Research Office – Rachael Mold and Yvonne Kirkham
Tel: 01603 591720

Faculty of Science Research Office – Helen Brownlee, Michelle Harris and Debbie Graver. Tel: 01603 591702

Faculty of Social Sciences Research Office – Julia Warner
Tel; 01603 593619