



# **Comprehensive Research Network National Meeting**

**Royal Institute of British Architects  
66 Portland Place, London**

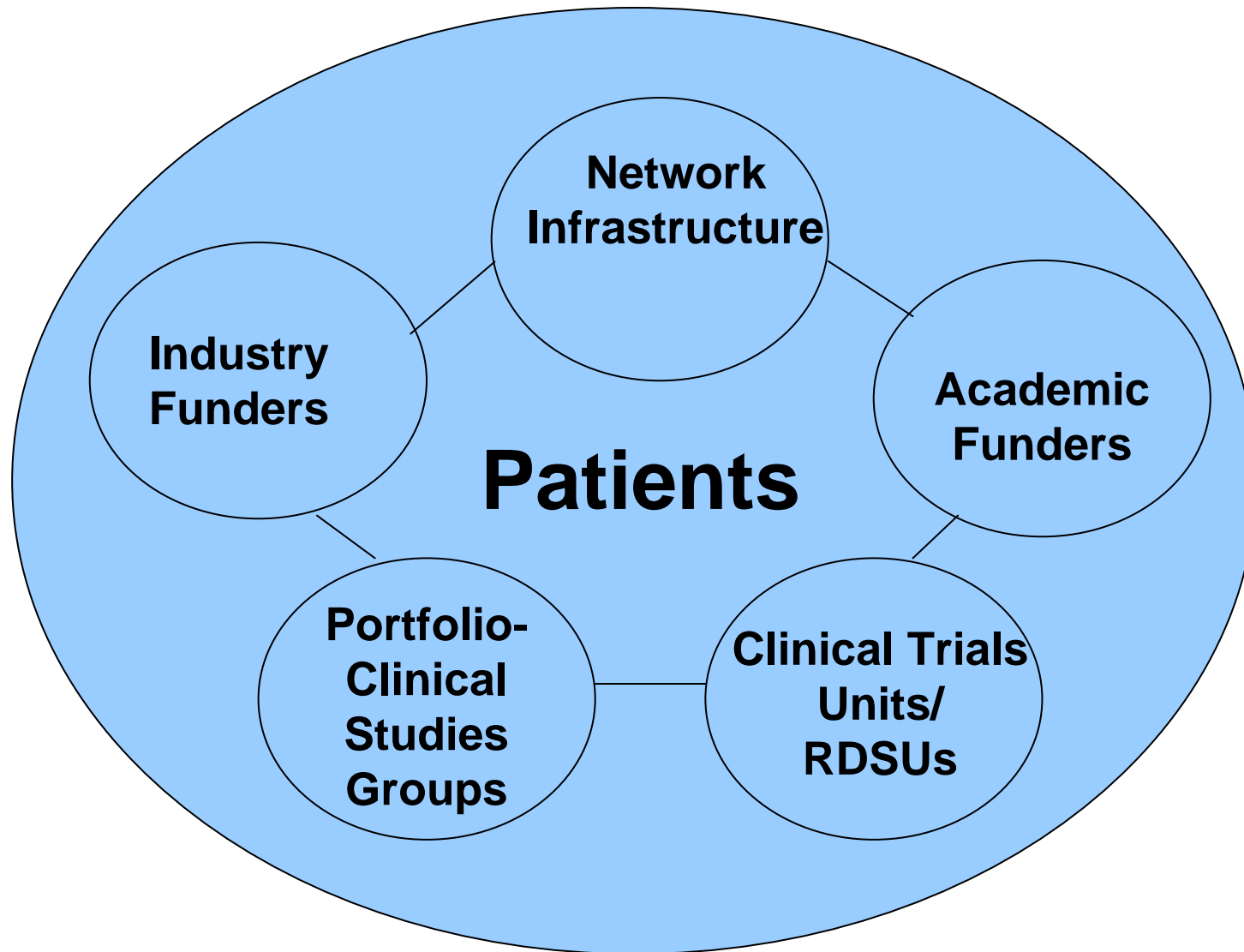
**Tuesday 8 May 2007**

**Progress with the implementation of the Comprehensive  
Research Network**

**Peter Selby Joint Director,  
UKCRN**

# **Benefits for Patients**

- ***The more rapid introduction of better treatments and care***
- ***Dissemination of excellence in clinical care***



**NATIONAL COORDINATING CENTRE(S)**

**UK Clinical Research Network (UKCRN)**

# UKCRN-UPDATES

- COMPREHENSIVE CLINICAL RESEARCH NETWORKS
- UK-WIDE WORKING

# UKCRN-UPDATES

- **COMPREHENSIVE CLINICAL RESEARCH NETWORKS**
- **UK-WIDE WORKING**

# Coordinating Centres



**Professor Gary Ford**  
Director, Stroke Research Network



**Professor Ros Smyth**  
Director, Medicines for Children Research Network



**Professors Martin Rossor and Ian McKeith**  
Co-Directors, Dementias and Neurodegenerative Diseases Research Network



**Professors Janet Darbyshire & Peter Selby**  
UKCRN CC, PCRN and Comprehensive Research Network



**Professor Paul Wallace**  
Deputy Director for Primary Care



**Professor David Cameron**  
Director, National Cancer Research Network



**Professor Til Wykes**  
Director, Mental Health Research Network



**Professor Des Johnston**  
Director, Diabetes Research Network



# What is a Comprehensive Local Research Network?

- Primary vehicle for NHS infrastructure
- Primary, secondary and tertiary care and MH
- Clinical Director and Network Manager
- Network Executive and Network Board
- Host organisation
- **Research management for portfolio**
- A typical CLRN:
  - NHS staff – **management, sessions for investigators**, nurses, data managers, secretarial
  - infrastructure in primary care
  - diagnostics and service costs
  - running costs

# CLRN-A balance between national standards and consistency, and local ownership and control!

Geography-functional clinical research entities

Host Organisations

Clinical Directors

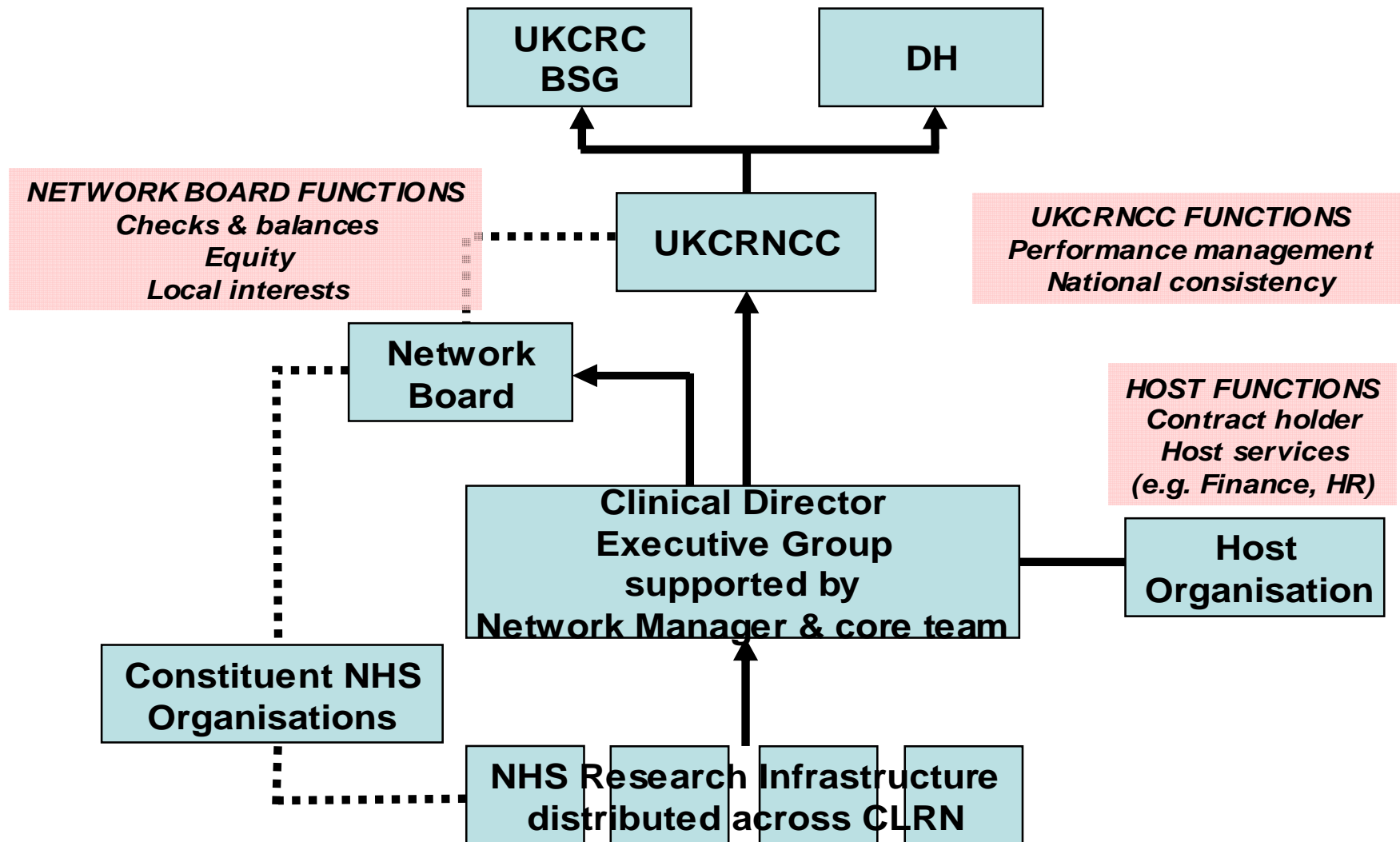
Network Boards

Core Teams

NHS Infrastructure

*Done quickly—for patients and staff*

# CLRN Organisational Template



UK Clinical Research Network (UKCRN)



# Key Development Issues for CRN

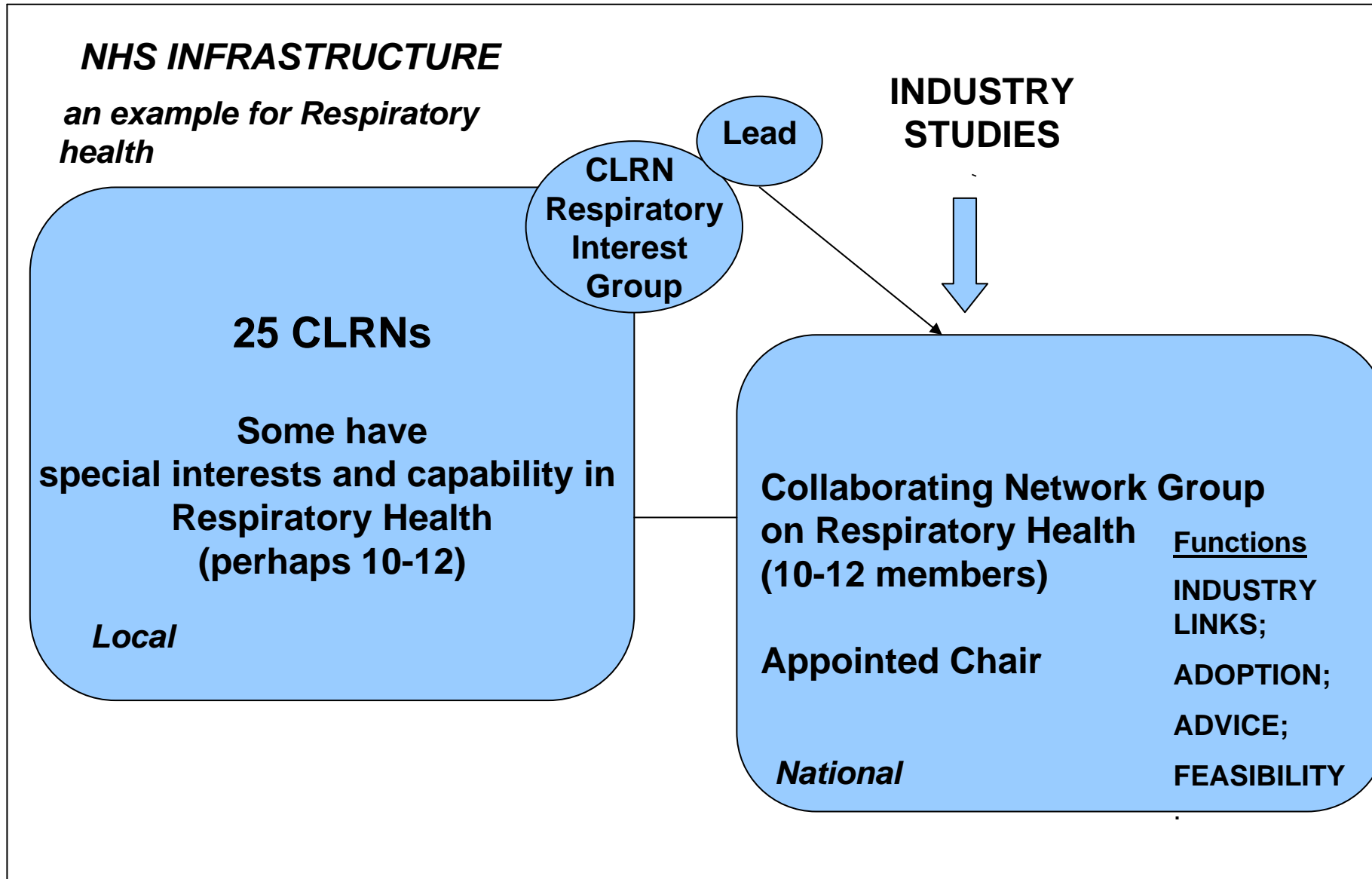
- **Links to Industry (Adoption, feasibility etc.)**
- **Similar “topic specific” issues for non-commercial studies**
- **Identify with the subject – enthusiasm and motivation**
- **National level advice on subject**
- **How to address gaps in capacity**
- **Communication**

*and others*

# ***WORK IN PROGRESS AND DISCUSSIONS***

- ***Collaborating Network Groups***
- ***A Framework for UK-Wide collaboration  
between Networks***

## PROPOSALS FOR RUNNING CRN/INTERFACE WITH INDUSTRY



# Health Specific Categories (UKCRC)

Other

Injuries

Skin

Congenital

Eye

Renal and Urogenital

**Stroke**

Respiratory

Blood

Ear

Oral and Gastrointestinal

Reproductive Health

Musculoskeletal

**Metabolic and Endocrine**

**Mental Health**

Inflammatory and Immune

Cardiovascular

Infection

**Neurological**

**Cancer**

*(child health, patient safety, genetics, cross-cutting themes)*

# UKCRN-UPDATES

- COMPREHENSIVE CLINICAL RESEARCH NETWORKS
- UK-WIDE WORKING

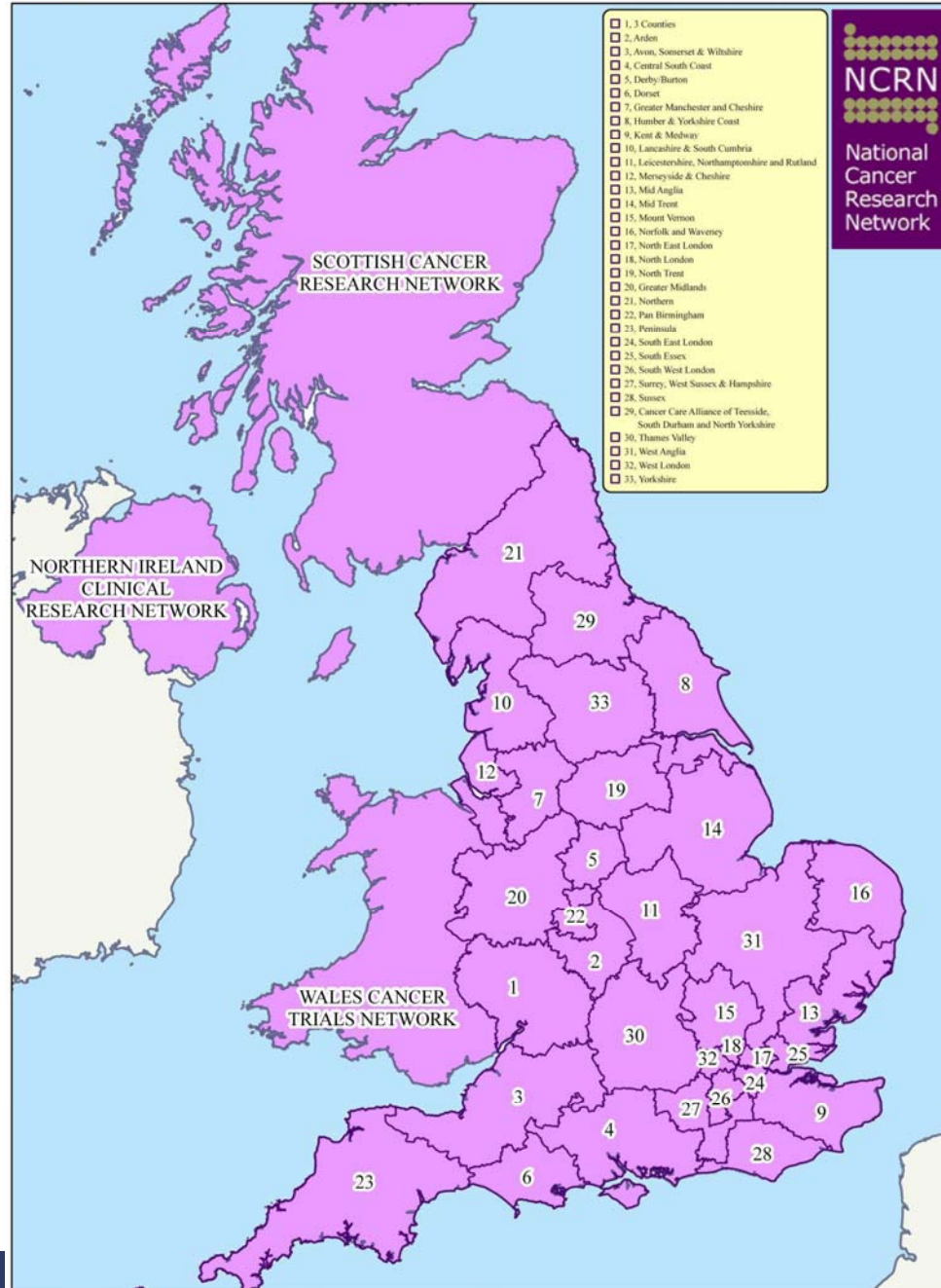
# **Opportunities for Links – UK Wide Working**

- **Network infrastructure provided by devolved administrations**
- **UKCRC provides a UK Wide framework**
- **Investigators and collaborators are mainly interested in the research portfolio and their subject**

# *How To Build Up UK-Wide Working?*



- Maintain/strengthen **existing links in TCRNs**
- Use CRN to strengthen links through the commercial and non-commercial portfolio--  
**Collaborating Network Groups**



# NCRN Local Research Networks

- 40 LRNs (plus UKCCSG)
- Total population 60.2 (100% coverage)
- 474 studies in the UKCRN portfolio
- 21 Clinical Studies Groups
- Staff

# Research Networks in Scotland

- **Scottish Diabetes Research Network**
- **Scottish Medicines for Children Research Network**
- **The Scottish Mental Health Network**
- **The Scottish Stroke Research Network**
- **Scottish Cancer Research Network**
- **Scottish Primary Care Networks**
- **To facilitate participation in clinical research in the non-University Hospital Boards**

# **Thematic Research Networks In Wales**

## ***Clinical Research Collaboration Cymru (CRC Cymru)***

- **Children and Young People Research Network**
- **Mental Health Research Network (MHRN)**
- **Dementias and Neurodegenerative Diseases Research Network (NEURODEM)**
- **Diabetes Research Network (DRN)**
- **Thematic Research Network for Emergency and Unscheduled Treatment (TRUST)**
- **Learning Disabilities and Autism Network (LDAN)**
- **Epilepsy Research Network (WERN)**
- **Older People and Ageing Network (OPAN)**
- **Public Health Improvement Research Network (PHIRN)**
- **Research Professional Networks (RPNs)**

# Research Networks in Northern Ireland

- **Northern Ireland Clinical Research Network (NICRN)**
- **Northern Ireland Stroke Research Network – NICRN (Stroke)**
- **Medicines for Children; Diabetes; Mental Health; Cardiovascular; Eyes and Dementias and Neurodegenerative Diseases**
- **Cancer Network**

## Collaborating Network Groups (UK Wide)

**Geographical Networks—  
Each country**

	Musculoskeletal	Respiratory	Eyes	TCRN Topics	Primary care	Etc,etc
CLRN 1						
CLRN 2						
CLRN 3						
NI						
SC1						
SC2						
W1						

# CRN – TCRN Links

**National**

**UKCRN, TCRN and PCRN  
Coordinating Centres**

**Local**

**Comprehensive Local Research  
Networks (CLRNs): everywhere,  
NHS Infrastructure/SSC including  
sessions and RMG.**

**Topic LRNs: partial coverage,  
NHS Infrastructure/SSC**

***Not matching geography; not matching functions***

# **ALL THE OTHER WORKSTREAMS!**

# UKCRN Coordinating Centre Workstreams

- Research Management-central sign off,passports costings etc
- Experimental Medicine
- Industry links
- Training and Education
- Research Governance/Advice
- Clinical Trials Units
- Information Systems
- Patient and Public Involvement
- Communications
- Portfolio development
- UK Wide Working

QUESTIONS?